

Pump construction

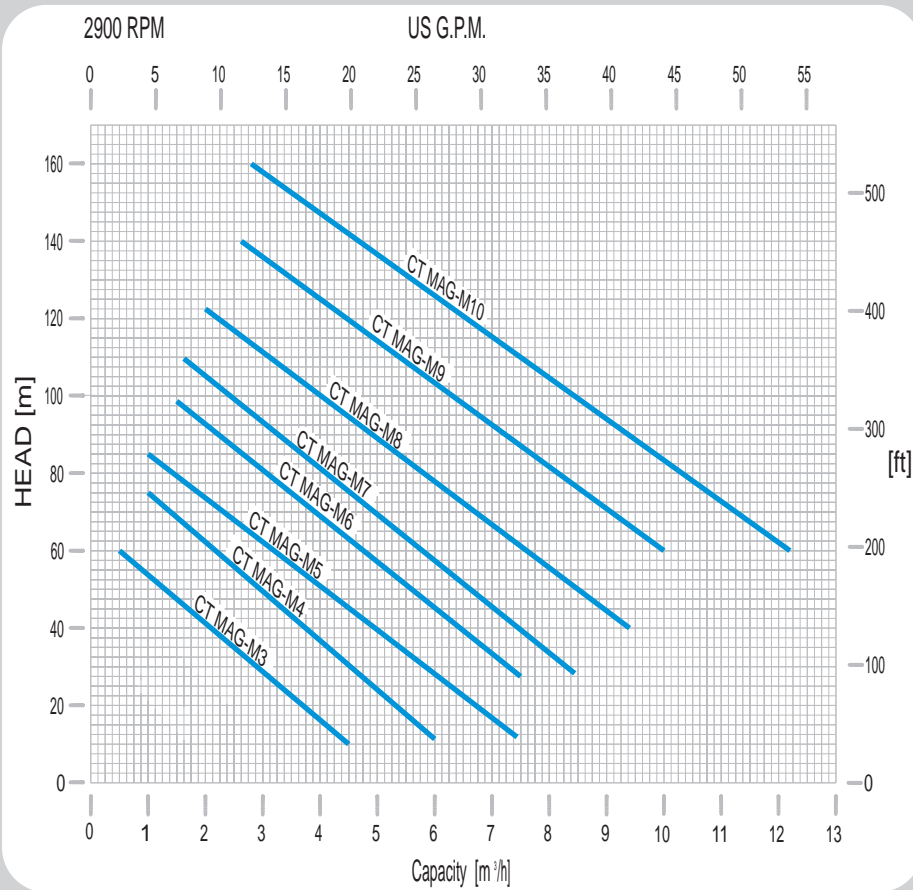
Close-coupled drivers are conventional drivers mounted directly to pumps frame. No base, coupling or guards are required for this mounting style.

Connections:

Flange rating per DIN Norms Class PN16-25-40.

Flange rating per ANSI B16.5 Class 300.

Performance curves



Operating Limits

- Max viscosity: 200cSt
- Max system pressure: 50bar (standard) 150bar (HP Version)
- Higher pressure version available on request.
- Flow up: to 24mc/h
- Head up: to 164m
- Temperature range: from -185 °F (-120°C) to +842 °F (+450°C)
- Electric motors: from 0,55kW up to 75kW
- Available ATEX II - / 2G cbk II C T2-T5



CT MAG-M

Horizontal, sealless Special Peripheral pump with permanent magnet drive system, no mechanical seal



Manufactured by: 3MPUMPS s.r.l. Via dell'Artigianato, 120 - 45015 - Corbola (Ro) - Italy - www.3mpumps.com Tel.+39 0426346304 Fax.+39 0426349126



For more information please contact:

" ; j ßal96084, .] KZgdI I _l_j [mj] gZ H[\h^gh]h dZgZeZ'92 Ebl /l ð7(812)316-38-53 .l-7(921)300-31-11



Printed 27/06/2011

CT MAG-M Series

The separation of liquid chamber/atmosphere by means of an isolation shell is the best solution to pump aggressive, explosive and toxic liquids, hydrocarbons, heat transfer liquids and liquids difficult to seal.

The hermetic sealless is the best solution for the chemical, pharmaceutical and petrochemical industry.

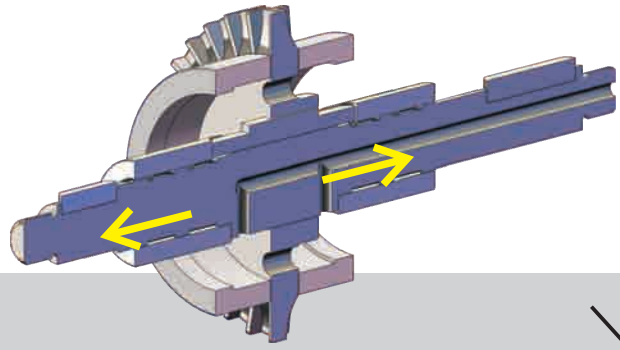
A wide range of pumps covers the different performances.

Low NPSH pumps (0,5m) are the perfect design for the refrigeration market.



Pump Details

Particular design of the hydraulic, with self balancing impeller to improve the wear ring life.



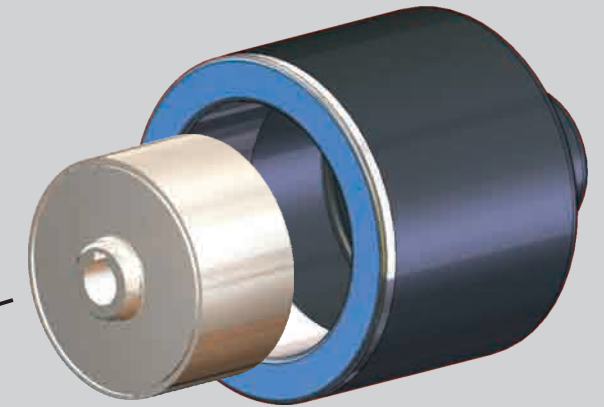
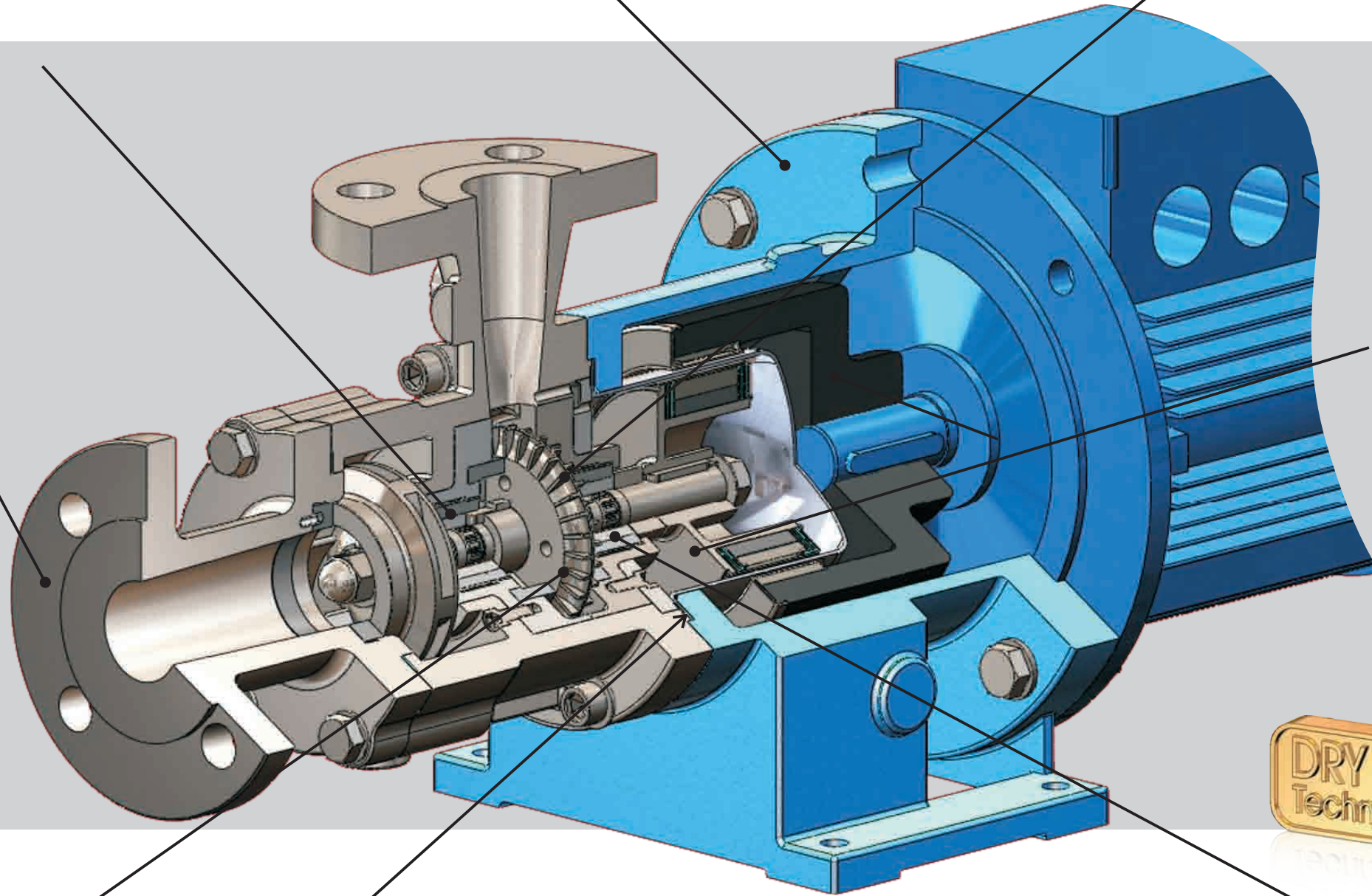
Epoxy primer and polyacrylic enamel water-based painting for the best quality resistance linked to the environmental respect.

The rear shell is made of one single piece, no welding, ellipsoidal profile that has been studied to withstand higher pressures than the traditional one.

Available two versions, AISI 316 the standard construction, and Hastelloy®-C276 for high pressure version - providing a safe and efficient solution – system pressure max 150 bar. Titanium Alloy is an upgrade when higher pressure ratings and increased efficiency are required.

CF8M or WCB Pump Casing & Impeller High quality casting components.

Other materials:
 - Hastelloy®C276,
 - Incoloy®825,
 - Duplex,
 - Others available on request.



High power synchronous magnetic coupling designed by our Technical Office and with rare earth magnetic elements mechanically locked.

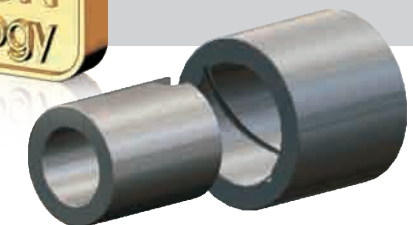
The high performance magnets can operate at liquid temperature of up to 842°F (450 °C) without external cooling.

RWP QUICK CHANGE CARTRIDGE KIT to guarantee an easy and fast maintenance.



The sealing system with flat gaskets prevents product from leaking in the atmosphere – different materials available:

- Asbestos free
- PTFE
- Graphoil
- Garlock®
- Gylon®



Field assembling of the product lubricated bearing arrangement does not require special tools.

The Bearing materials are available in four different types to provide the best solution for each application: Silicon Carbide (SSIC), Tungsten Carbide (TC), Special Carbon to allow a dry running situation and PTFEC/G for any applications where the Special Carbon cannot be used.

The adoption of elastic rings reduces the sleeve bearing loads and the thrust bearing loads to the minimum, to guarantee many years of maintenance-free operation.